

On

Track

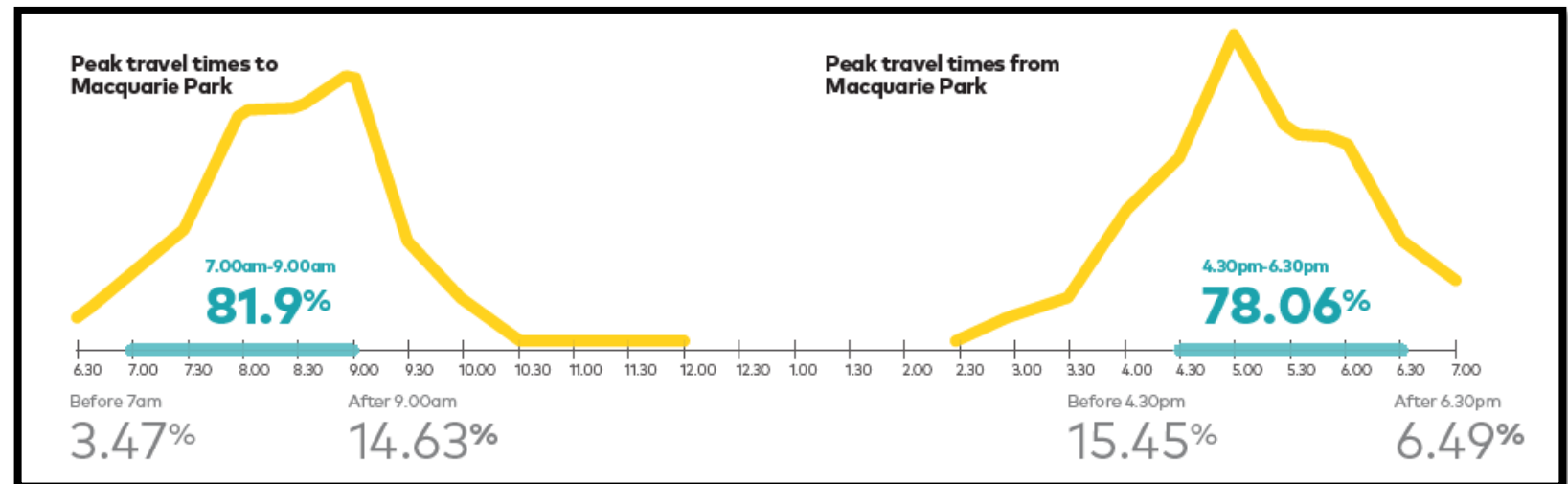
2018/19

Nikki Tallentire
May 2019

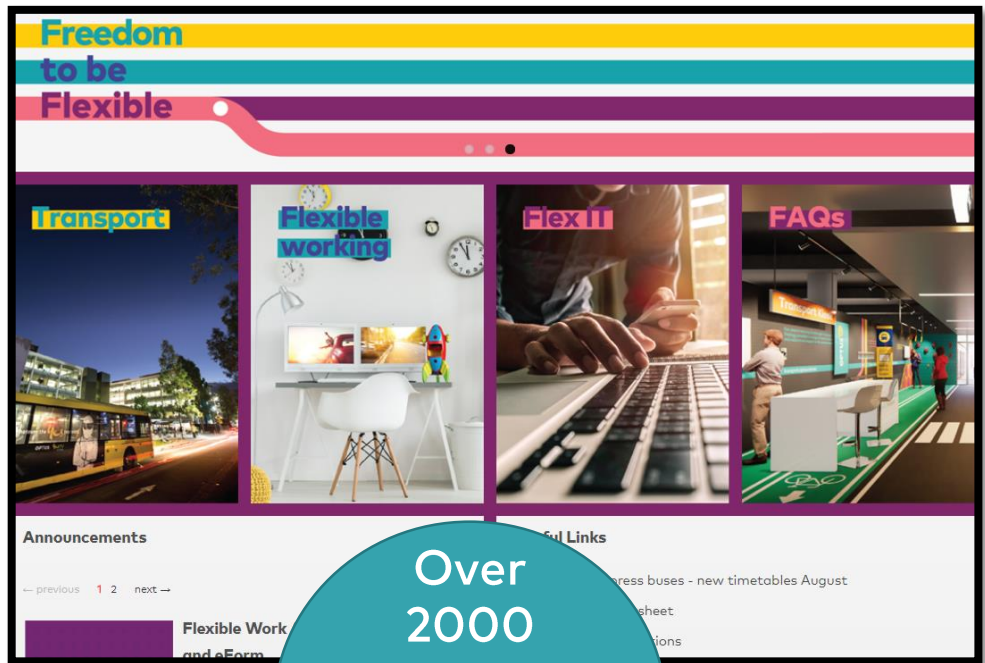
OPTUS

On Track program reflections

- On Track program: September 2018 to May 2019
- Objective – to manage the disruption of the rail closure:
 - Encouraging travel in different ways
 - Travelling at different times
 - Flexible working



Connecting with comms



Over 2000 unique visitors to site

Freedom to be flexible

Stay on track during the temporary rail closure

Consider remote working if it suits your role.
Talk to your leader today about which of our flexible work options may suit you.

#OnTrack

We're on track

Briefing and Q&A session

Find out more about the temporary Epping to Chatswood rail closure.

When: Tuesday 22 May, 10 - 11am
Where: The Auditorium

#OnTrack

Your rail closure guide

2018/2019

#OnTrack

Transport Kiosk

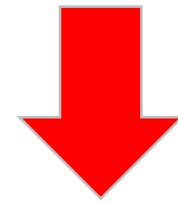


Increased bus frequency and routes



Buses
+10.5%

Optus bus
Public bus
Station Link



Driving
-4%

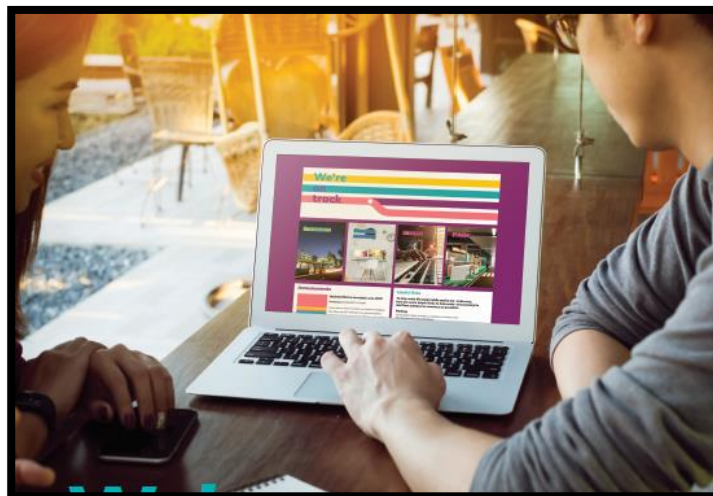
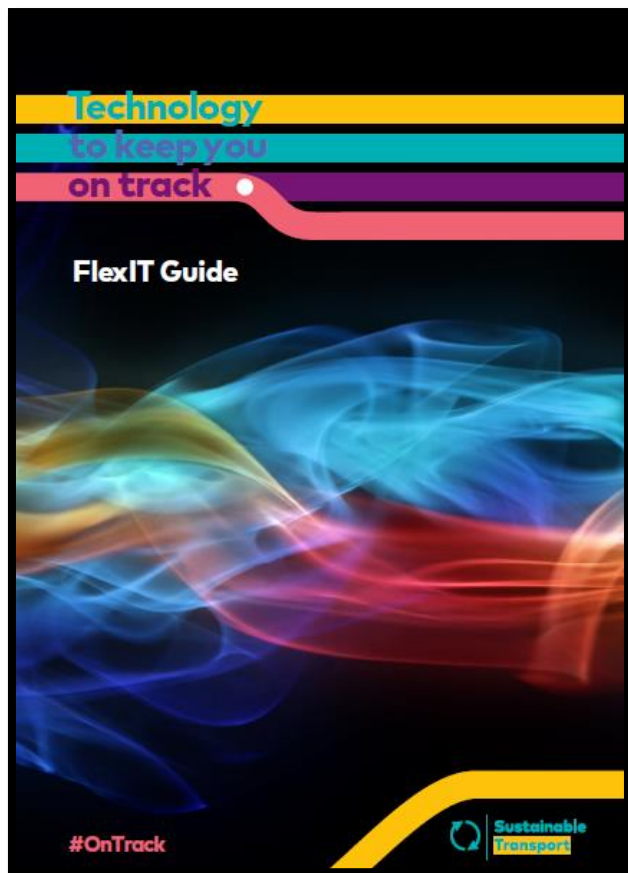
Drive Alone
Ride Share

Journey planning/travel options

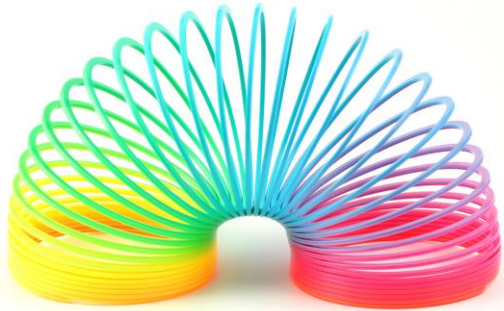
82
journey
planning
sessions



Technology enabling flexibility



Flexible work – next steps



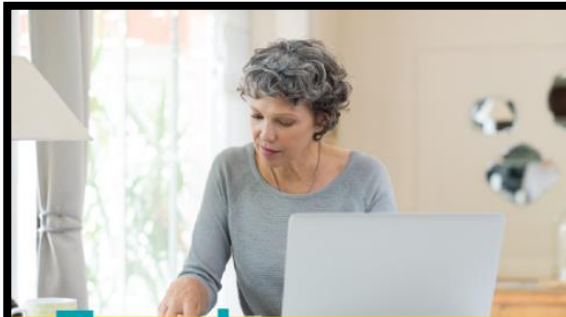
Freedom to be flexible

Leader Information session

Find out about the flexible work options available to support your team during the temporary rail closure.

When: Tuesday 12 June, 10am – 11am
Where: The Auditorium

#OnTrack



Freedom to be flexible

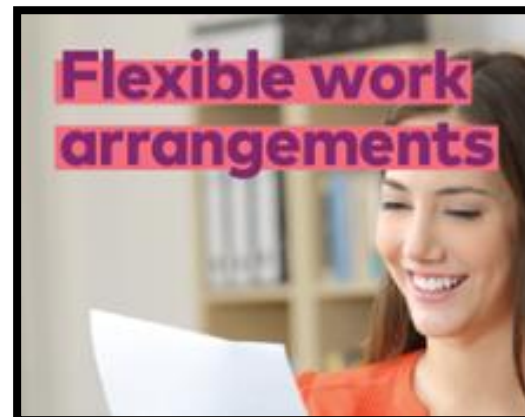
Are you Metro Ready?

- ✓ Review your work and travel plans
- ✓ Check out our Flexible Work Arrangements policy
- ✓ If a flexible work option suits your role, talk to your leader and submit a Flexible Work Arrangement eForm

OPTUS



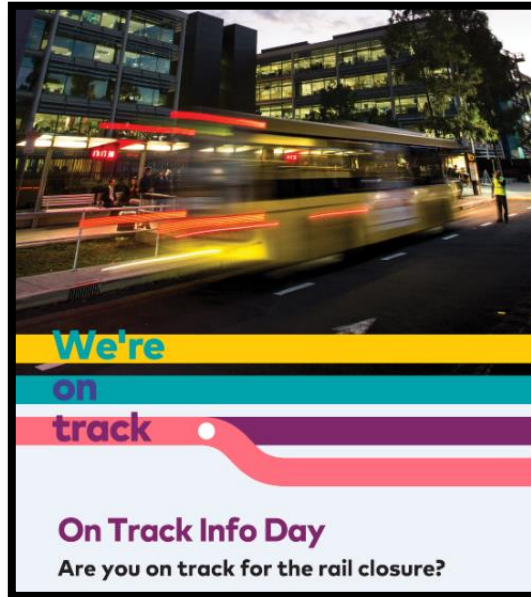
+11%
employees
WFH 1-2
days a week



Flexible work arrangements

Program lessons

- ELT support strong. Helped achieve high program awareness and satisfaction.
- Mascot activation benefitted a small number of employees. Travel times to OCS, shifting the peak and flexible work reduced need for Mascot space, allowed us to close desk bookings early.
- Regular Auditorium sessions worked well.
- Working with Transport for NSW, Sydney Metro and Connect for an Info day and sessions on Campus helped with employee engagement and planning.



Thank you

#ontrack

OPTUS

 **Sustainable
Transport**