

City of Ryde Bushcare

Join today!

If you would like to join the City of Ryde Bushcare Program or would like more information please visit the Bushcare webpage: www.ryde.nsw.gov.au/bushcare

Or contact the Bushcare Volunteer Coordinator:

Phone: 9952 8222

Email: bushcare@ryde.nsw.gov.au

- No experience necessary
- Come along and try it out before you sign up
- Join us whenever you are able. There is no minimum commitment

Please wear long pants, long sleeved shirt, sturdy enclosed shoes, a hat and sunscreen.

All tools, gloves and training are supplied




List of Bushcare Groups

Group	Day	Time
Minga Reserve	1 st Saturday	9:00 – 11:00
Waterloo Park	1 st Saturday	1:30 – 3:30
Kittys Creek	1 st Sunday	8:00 – 10:00
Darvall Park	1 st Sunday	1:30 – 3:30
Greenwood Park	2 nd Saturday	9:00 – 11:00
Meadowbank Park	2 nd Sunday	9:00 – 11:00
Forsyth Park	2 nd Sunday	1:30 – 3:30
Stewart Park	3 rd Saturday	9:00 – 11:00
Strangers Creek	3 rd Sunday	9:00 – 11:00
Blue Gum High Forest	3 rd Sunday	1:30 - 3:30
Field of Mars Roving	4 th Saturday	9:00 – 11:00
Brush Farm Park	4 th Saturday	1:30 – 3:30
Ross St	4 th Sunday	9:00 – 11:00
Martin Reserve	4 th Sunday	1:30 – 3:30
Monash Rd	Every Tuesday	9:00 – 11:00
Pellisier Rd	4 th Wednesday	8:00 – 10:00
Cemetery Creek II	Every Thursday	



Regenerate bushland

Improve biodiversity

 City of Ryde

Lifestyle and opportunity @ your doorstep

What is Bushcare?

Bushcare volunteers assist with the management of natural areas on public land using bush regeneration techniques.

Bushcare Groups are very active in the City of Ryde, meeting on weekends and weekdays in a park near you.



Participate in a community activity in a tranquil bushland setting

City of Ryde Bushcare Program

The aim of the City of Ryde Bushcare Program is to **regenerate, protect and preserve bushland areas**.

By becoming a registered Bushcare volunteer you will be:

- Supporting the environment
- Meeting new people
- Gaining new skills and experience
- Improving biodiversity
- Joining a vibrant team



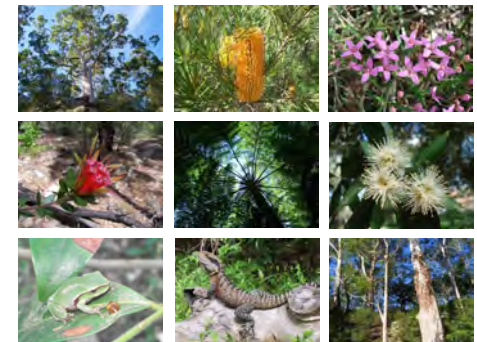
Have fun, get fit and contribute to a better environment

Activities

Bushcare encompasses a wide variety of activities including:

- Plant identification
- Woody weed removal
- Hand weeding
- Track maintenance
- Site assessment and monitoring
- Fauna observations
- Water quality testing
- Onsite training

There is something for everyone!



Learn about local flora and fauna