

5 DOG OFF-LEASH FEASIBILITY - CHARITY CREEK CASCADES

Report prepared by: Manager - Parks and Open Spaces
File No.: GRP/24/36 - BP24/253

REPORT SUMMARY

This report has been prepared in response to the resolution endorsed at the Council meeting on 26 July 2022:

- (a) *That Council permit on a 12-month trial basis, dog off leash use of the area at 55 Linton Avenue, Charity Creek Cascades.*
- (b) *That suitable facilities for this use be installed to support the activity funded from the open space operational maintenance budget.*
- (c) *That a further report be presented to Council following this trial.*

Council resolved to conduct a 12-month trial for dog off-leash use at Charity Creek Cascades playground at 55 Linton Avenue, West Ryde. The dog off-leash trial commenced on Wednesday, 7 September 2022 and concluded on Wednesday, 6 September 2023. As part of the trial Council installed a dog bowl, dog waste bin and bag dispenser at the park.

Council conducted community consultation for the duration of the trial and a total of 53 submissions were received from the community. The majority of respondents (72 percent) were supportive of dog off leash use within Charity Creek Cascades playground. The remaining 28 percent did not support the trial on the basis of safety.

Charity Cascades is a high-risk flood prone area, and any development or use of the land must avoid adverse or cumulative impacts on flood behaviour to minimise flood risk to life and neighbouring property. Based on this flood risk only an unfenced off-leash area can be considered for this location.

RECOMMENDATION:

That Council declares the public area (by issue of an order) that it is to be an off-leash area (unfenced) pursuant to Section 13(6) of the Companion Animals Act 1988 at 55 Linton Avenue, West Ryde.

ATTACHMENTS

- 1 Consultation Report - September 2023 - Charity Creek Cascades - Dog Off-Leash Trial

ITEM 5 (continued)

Report Prepared By:

Scott Wilkie
Manager - Parks and Open Spaces

Report Approved By:

Charles Mahfoud
Executive Manager - City Infrastructure

Luke Homann
General Manager - Business and Operations

ITEM 5 (continued)

Discussion

Background

In February 2022 Council resolved to investigate and report on establishing a dog off-leash area at 55 Linton Avenue within Charity Creek Cascades. As a result of this process, Council further resolved at the 26 July 2022 Council Meeting to permit a 12-month trial for a dog off-leash area at 55 Linton Avenue. The dog off-leash trial commenced from Wednesday, 7 September 2022 and concluded on Wednesday, 6 September 2023. This trial included the installation of a dog bowl, waste bin and bag dispenser.

If the results of the trial supports the creation of an off-leash park at 55 Linton Avenue, West Ryde. Council will be required to declare the public area (by issue of an order) that it is to be an off-leash area (unfenced) pursuant to Section 13(6) of the Companion Animals Act 1988.

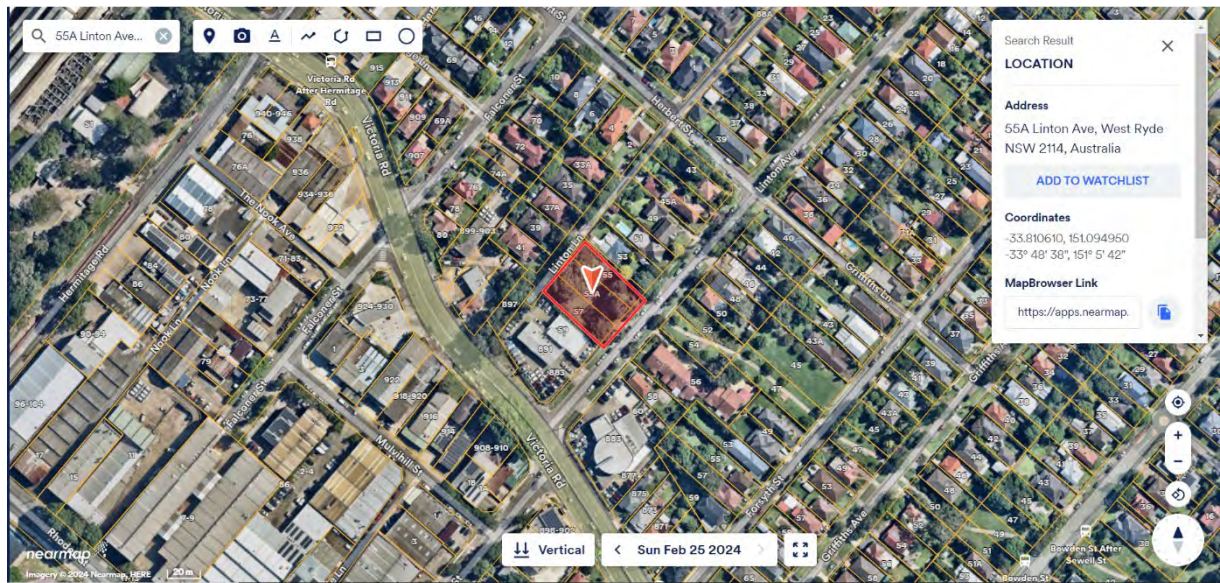


Image1. Displays the location of the trial at 55 Linton Avenue West Ryde.

Community Consultation

Council undertook an online and written submission consultation period from Wednesday 7 September 2022 to Wednesday 6 September 2023. This was promoted through the City of Ryde's Have Your Say website, flyers to surrounding residents, signage in the park, Facebook ads, listings in the local newspaper and the Your City News eNewsletter.

At the conclusion of the survey period a total of 53 submissions were received from the community, with 51 from the online survey and 2 email submissions. Most community respondents were dog owners, many of whom visited the dog park at least once a fortnight during the trial period. A summary of the consultation outcomes is provided below.

ITEM 5 (continued)



Approximately fifty percent (50%) of respondent's support making the Charity Creek Cascades playground a permanent dog off-leash area, citing the convenient location, the desire for a space dedicated for dogs to be off-leash, and the provision of support facilities such as bins, poo-bags and water facilities as the key reasons contributing to this view.

24 percent of respondents who supported the dog off-leash also suggested changes such as installing a fence (for road safety), additional support facilities (more poo bags, water facilities); maintaining the lawn; provide additional seating; and provide more dog off-leash areas.

The 26 percent respondents not supporting an off-leash area becoming permanent, expressed safety concerns for other park users, children and the potential of dogs running onto Linton Avenue.

Constraints

Under the City of Ryde 2017 flood risk precinct mapping Charity Creek Cascades is identified as being a high flood risk area. As a high flood risk area, it is imperative that any development or use of the land avoids adverse or cumulative impacts on flood behaviour and the environment to minimise flood risk to life and neighbouring property.

Based on the flood risk, any use of fencing or other park infrastructure which would have the potential to impede flow of water in a flood event should be avoided to minimise the risk of negative impacts on surrounding properties. As a result, only an unfenced dog off-leash area should be considered for this location.

ITEM 5 (continued)

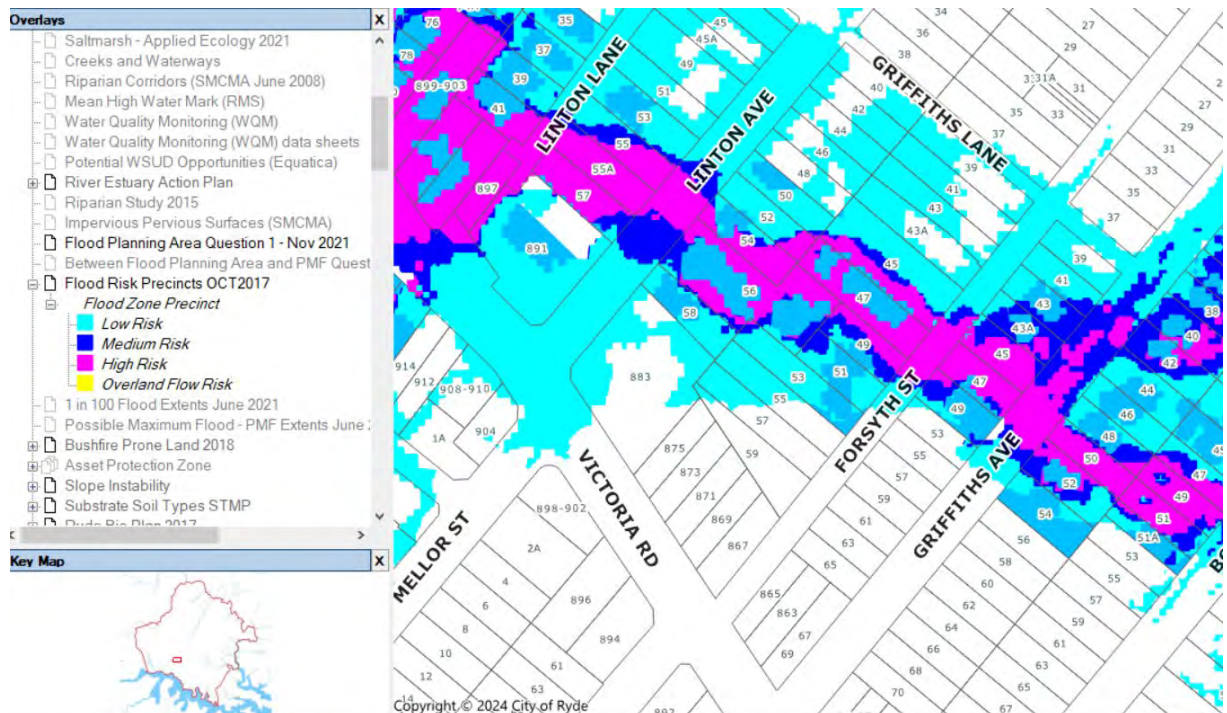


Image 2: The 2017 Flood Risk Map for Charity Creek Cascades displays the proposed off-leash site identified as numbers 55, 55A and 57 Linton Avenue, West Ryde located in the purple high-risk area.

Financial Implications

Adoption of the recommendation will have no financial impact.

ITEM 5 (continued)

ATTACHMENT 1

**CHARITY CREEK
CASCADES**

DOG OFF-LEASH TRIAL



COMMUNITY CONSULTATION REPORT
SEPTEMBER 2023

ITEM 5 (continued)

ATTACHMENT 1



CITY OF RYDE | Charity Creek Cascades - Dog Off-Leash Trial
Community Consultation Report
September 2023 © City of Ryde

DISCLAIMER

While every reasonable effort has been made to ensure that this document is correct at the time of printing, the City of Ryde, its agents and employees, disclaim any and all liability to any person in respect of anything or the consequences of anything done or omitted to be done in reliance or upon the whole or any part of this document.

COPYRIGHT NOTICE

If you wish to reproduce, alter, store or transmit material appearing in this submission document for any purpose, requests for formal permission should be directed to the City of Ryde.

ITEM 5 (continued)

ATTACHMENT 1

CHARITY CREEK CASCADES - DOG OFF-LEASH TRIAL

Contents

Executive Summary	4
Community Consultation Methodology	5 – 6
Community Consultation Results	7 – 10
Appendices	11 – 17
• Website	11
• Have Your Say eNewsletter	12
• A4 Flyer	13
• Park Signage	14
• Newspaper Ad	15
• Facebook Ad	16
• Your City News	17



ITEM 5 (continued)

ATTACHMENT 1

CHARITY CREEK CASCADES - DOG OFF-LEASH TRIAL

Executive Summary



At the Council Meeting on 26 July 2022, Council resolved to conduct a 12-month trial for dog off-leash use at Charity Creek Cascades at 55 Linton Avenue, West Ryde.

The dog off-leash trial ran from Wednesday 7 September 2022 to Wednesday 6 September 2023. As part of this trial, Council installed a dog bowl, dog waste bin and bag dispenser.

The Have Your Say period occurred from Wednesday 7 September 2022 to Wednesday 6 September 2023 during which the community could provide feedback on the dog off-leash trial via an online survey or by written submission. This was promoted through the City of Ryde's Have Your Say website, flyers to surrounding residents, signage in the park, Facebook ads, listings in the local newspaper and the Your City News eNewsletter.

A total of 53 submissions were received from the community, with 51 from the online survey and 2 email submissions.

ITEM 5 (continued)

ATTACHMENT 1

CHARITY CREEK CASCADES - DOG OFF-LEASH TRIAL

Community Consultation Methodology



Date	Tool	Stakeholders	Overview	Engagement
Wed 7 Sep 2022 to Wed 6 Sep 2023	Have your Say Website	Website users	A project webpage with background information, online submission form and project updates.	413 pageviews 378 unique pageviews
Wed 7 Sep 2022 to Wed 6 Sep 2023	Online Survey	Website users	An online survey where stakeholders could provide feedback on the trial. This was accessed through Council's Have Your Say webpage.	51 survey responses received
Wed 7 Sep 2022 to Wed 6 Sep 2023	Information phone line and email	All stakeholders	The City of Ryde main phone line and email address was provided for the trial and was open for feedback from the community.	2 written submissions received
Wed 7 Sep 2022	A4 Flyer	Surrounding residents adjacent to park - 200m radius	A double sided A4 flyer was letterbox dropped to promote the trial and feedback opportunities.	200 flyers approx.
Wed 7 Sep 2022 to Wed 6 Sep 2023	Park Signage	Park users	Park signage was placed to promote the trial and feedback opportunities for park users and interested stakeholders.	2 x A2 signs

ITEM 5 (continued)

ATTACHMENT 1

CHARITY CREEK CASCADES - DOG OFF-LEASH TRIAL
Community Consultation Methodology



Date	Tool	Stakeholders	Overview	Engagement
Weds 7 Sep 2022	Have Your Say eNewsletter	Past Dog Off-Leash Trial HYS Submitters	eNewsletter emailed to promote the trial and provide information on feedback opportunities	839 eNewsletters delivered 513 eNewsletters opened
Sep 2022 – Aug 2023	Open community consultations listing in Your City News eNewsletter	Your City News subscribers	Listed in City News open community consultations section to promote the trial and consultation opportunities for all stakeholders.	N/a
Each Wed from 7 Sep 2022 to 30 Aug 2023	Open community consultations advertisement in The Weekly Times	Newspaper readership	Listed in open community consultation newspaper advertisement to promote the trial and consultation opportunities for all stakeholders.	38,000 total print readership
Wed 19 Oct 2022 to Fri 28 Oct 2022	Facebook Ad	Facebook users	Social media advertisement to promote the trial and feedback opportunities for all stakeholders	4915 users reached 310 users engaged

ITEM 5 (continued)

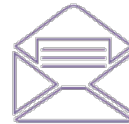
ATTACHMENT 1

CHARITY CREEK CASCADES - DOG OFF-LEASH TRIAL

Community Consultation Results



51
**SURVEY
RESPONSES**



2
**EMAIL
SUBMISSIONS**

Please indicate whether you support or do not support the trial dog off-leash area at Charity Creek Cascades to become permanent? (n=50)

48%

I support

24%

I support, with
changes

26%

I do not support

2%

No preference /
unsure

The majority of community consultation respondents were dog owners, many of whom visited the dog park at least once a fortnight during the trial off-leash period.

FAVOURABLE ELEMENTS



Approximately three-quarters (72%) of respondents supports making the Charity Creek Cascades dog off-leash permanent (including those who want changes).

Favourable elements included the **convenient location**, much **needed space for dogs** to be off-leash, and the **provision of support facilities**, such as bins, poo bags and water facilities.

KEY SUGGESTIONS



The **most common suggestion for improvement** was to **fence the dog off-leash area**, due to road safety.

Other suggestions included to **consider alternative locations** for the dog off-leash area; provide **additional support facilities** (more poo bags, water facilities); **maintain the lawn**; provide **additional seating**; and provide more dog off-leash areas.

CONCERNS



Safety was the most common concern and reason for not supporting the dog off-leash area to become permanent. Respondents expressed that the dog off-leash area was unsafe as it was **unfenced** and **located next to a busy road**. Some respondents also noted the **safety of other park users and children**.

ITEM 5 (continued)

ATTACHMENT 1

CHARITY CREEK CASCADES - DOG OFF-LEASH TRIAL

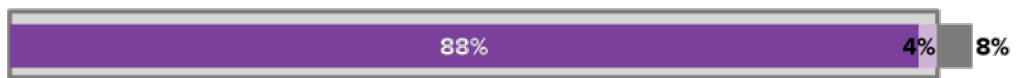
Community Consultation Results

Sample Background

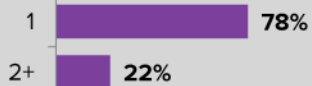


Are you a dog owner? (n=51)

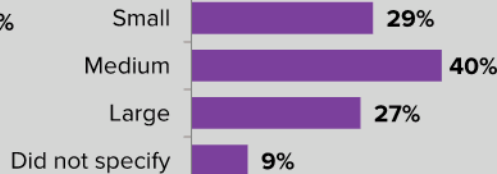
■ Yes ■ No, but I walk dog(s) ■ No



Number of dog(s): (n=45)



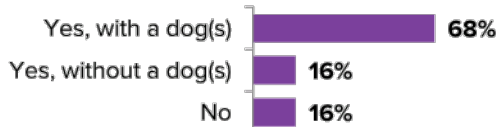
Size of dog(s): (n=45)



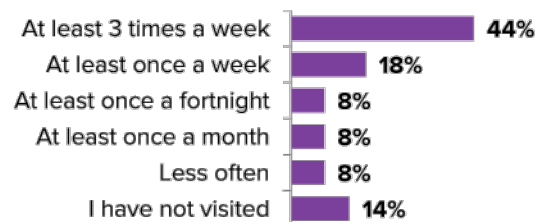
Note: Respondents could select multiple options, hence total does not add to 100%

Questions above were only asked of respondents who answered 'Yes' or 'No, but I walk dog(s)' to 'Are you a dog owner?'.

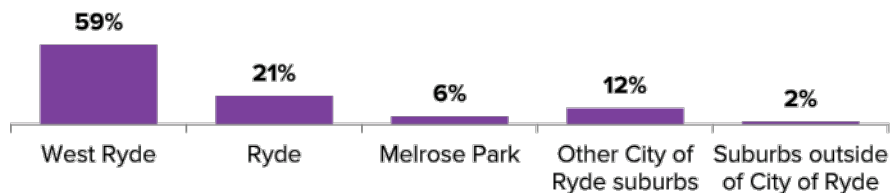
Have you visited Charity Creek Cascades during the trial period? (n=51)



How often have you typically visited Charity Creek Cascades during the trial? (n=51)



Respondents suburb: (n=49)



ITEM 5 (continued)

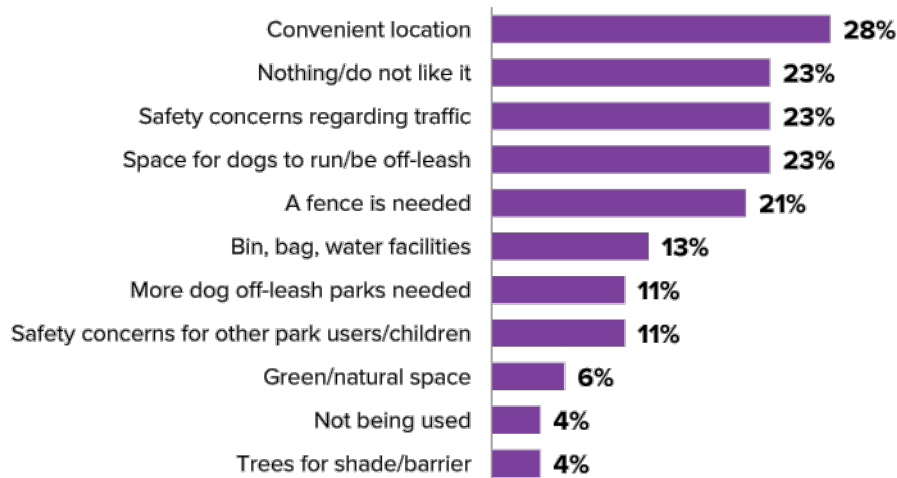
ATTACHMENT 1

CHARITY CREEK CASCADES - DOG OFF-LEASH TRIAL

Community Consultation Results



Most liked about the trial dog off-leash area: (open-ended) (n=47)



Note: only themes with >1 mentions are charted and percentages do not total 100% because each respondent can provide multiple themes in their verbatim

Ideas/suggestions to improve the trial dog off-leash area: (open-ended) (n=37)



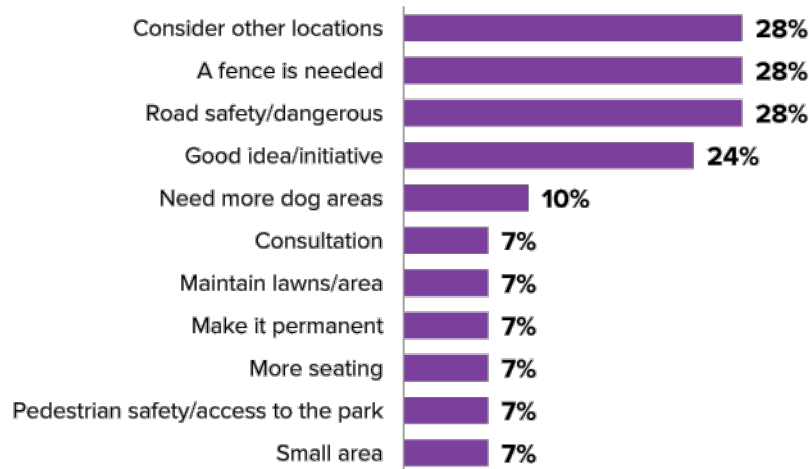
Note: only themes with >1 mentions are charted and percentages do not total 100% because each respondent can provide multiple themes in their verbatim

ITEM 5 (continued)

ATTACHMENT 1



Further comments/suggestions, including written submissions: (open-ended) (n=31)



Note: only themes with >1 mentions are charted and percentages do not total 100% because each respondent can provide multiple themes in their verbatim

ITEM 5 (continued)

ATTACHMENT 1

CHARITY CREEK CASCADES - DOG OFF-LEASH TRIAL

Appendices

HAVE YOUR SAY WEBSITE

Charity Creek Cascades - Dog Off-Leash Trial

Closing on 06 September 2023, 11:59 PM



At its meeting on 26 July 2022, Council resolved to conduct a 12-month trial for dog off-leash use at Charity Creek Cascades at 55 Linton Avenue, West Ryde.

When will the trial take place?

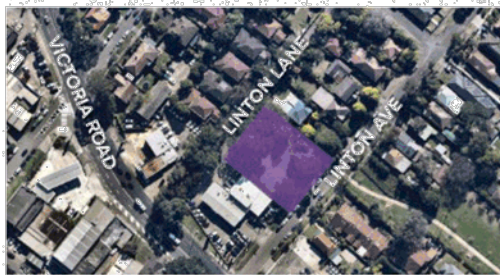
The dog off-leash trial will run from Wednesday 7 September 2022 until Wednesday 6 September 2023. As part of this trial, Council has installed a dog bowl, dog waste bin and bag dispenser.

Can Council consider fencing for this dog off-leash area?

Unfortunately, fencing of the off-leash area will not be possible at this site.

This is due to the park being identified as a flood risk zone and the potential impact it could have on water flow in the park and to surrounding properties.

During the trial, Council would like to hear your thoughts on the dog off-leash facilities, what you like and any ideas or suggestions for improvement. See below on how you can Have Your Say.



Related Information

- [Council Resolution: 26 July 2022](#)
- [Dog Off-Leash Area Rules](#)

HAVE YOUR SAY

You can Have Your Say on the Charity Creek Cascades - Dog Off-Leash Trial in a number of ways including via email, post or by completing the online survey.

Online Survey

To Have Your Say, complete the online survey. If you are unable to fill in this survey online or don't have access, please contact Customer Service on 9952 8222. Survey responses will be received up until Wednesday 6 September 2023.

[Complete the Online Survey](#)

Written Submissions

Written submissions must be clearly marked as 'Charity Creek Cascades - Dog Off-Leash Trial'. All submissions must be received by Wednesday 6 September 2023.

Email cityofryde@ryde.nsw.gov.au

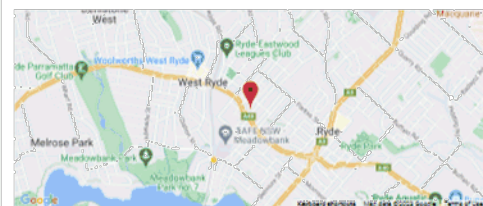
Post City of Ryde, Locked Bag 2069, North Ryde NSW 1670

Privacy Notification

Personal information collected from you is held and used by Council under the provisions of the Privacy and Personal Information Protection Act 1998. The supply of information is voluntary, however if you cannot provide it, it could affect the way Council provides services to you. Council may be subject to requests for access to, or correction of, your information. Please note that the exchange of information between the public and Council may be accessed by others and could be made publicly available under the Government Information (Access) Act 2009 (GIPA Act). If you require further information please contact Council's Customer Service Centre on 9952 8222.

Location

Charity Creek Cascades, 55 Linton Avenue, West Ryde 2114 [View Map](#)



Contact Us

If you require more information about the Charity Creek Cascades - Dog Off-Leash Trial please email cityofryde@ryde.nsw.gov.au, or if you are unable to make an online/written submission, please call our Customer Service Centre on 9952 8222.

If you require translating assistance, you may call the Translating and Interpreting Service on 131 450 and ask for an interpreter to contact Council for you.

ITEM 5 (continued)

ATTACHMENT 1


CHARITY CREEK CASCADES - DOG OFF-LEASH TRIAL

Appendices (continued)

HAVE YOUR SAY NEWSLETTER

City of Ryde

Charity Creek Cascades Dog Off-Leash Trial




At its meeting on 26 July 2022, Council resolved to conduct a 12-month trial for dog off-leash use at Charity Creek Cascades at 55 Linton Avenue, West Ryde.

When will the trial take place?

The dog off-leash trial will run from Wednesday 7 September 2022 until Wednesday 6 September 2023. As part of this trial, Council has installed a dog bowl, dog waste bin and bag dispenser.

Can Council consider fencing for this dog off-leash area?

Unfortunately, fencing of the off-leash area will not be possible at this site. This is due to the park being identified as a flood risk zone and the potential impact it could have on water flow in the park and to surrounding properties.



Have Your Say

During the trial, Council would like to hear your thoughts on the dog off-leash facilities, what you like and any ideas or suggestions for improvement. You can Have Your Say on the Charity Creek Cascades Dog Off-Leash Trial in a number of ways including completing the online survey, email or post.

Online Survey

Complete the online survey to provide your feedback on the trial.

Submissions will be received up to Wednesday 6 September 2023.

Provide feedback via the Online Survey

Written Submissions

Written submissions must be clearly marked as 'Charity Creek Cascades Dog Off-Leash Trial' and can be sent to:

Email cityofryde@ryde.nsw.gov.au
Post General Manager, City of Ryde, Locked Bag 2069, North Ryde NSW 1670

All submissions must be received by Wednesday 6 September 2023.

For more information

To learn more about the Charity Creek Cascades Dog Off-Leash Trial, please visit the Have Your Say page at www.ryde.nsw.gov.au/haveyoursay/CharityCreek, call Customer Service on 9952 8222 or email cityofryde@ryde.nsw.gov.au.

City of Ryde

Forward City of Ryde | 1 Pope Street | Ryde NSW 2112 | 9952 8222

You're receiving this because you've previously agreed to receive information from the City of Ryde. Your privacy is important to us. If you no longer wish to receive emails from the City of Ryde please click on the unsubscribe link below.

ITEM 5 (continued)

ATTACHMENT 1

CHARITY CREEK CASCADES - DOG OFF-LEASH TRIAL

Appendices (continued)

A4 FLYERS



CHARITY CREEK CASCADES
DOG OFF-LEASH TRIAL

A 12-month dog off-leash trial has commenced at Charity Creek Cascades.

At its meeting on 26 July 2022, Council resolved to conduct a 12-month trial for dog off-leash use at Charity Creek Cascades at 55 Linton Avenue, West Ryde.

When will the trial take place?
The dog off-leash trial will run from Wednesday 7 September 2022 until Wednesday 6 September 2023. As part of this trial, Council has installed a dog bowl, dog waste bin and bag dispenser.

Can Council consider fencing for this dog off-leash area?
Unfortunately, fencing of the off-leash area will not be possible at this site. This is due to the park being identified as a flood risk zone and the potential impact it could have on water flow in the park and to surrounding properties.

Have Your Say
During the trial, Council would like to hear your thoughts on the dog off-leash facilities, what you like and any ideas or suggestions for improvement. Please see the back of this flyer on how you can give your feedback.

City of Ryde



HAVE YOUR SAY

How do I give my feedback?
You can Have Your Say on the Charity Creek Cascades Dog Off-Leash Trial in a number of ways including:

Online Complete the online survey at www.ryde.nsw.gov.au/haveyoursay/CharityCreek or scan the QR code below

Email cityofryde@ryde.nsw.gov.au

Post City of Ryde, Locked Bag 2060, North Ryde, NSW 1670

Submissions must be received by **Wednesday 6 September 2023**.

Scan to Have Your Say

Translation Assistance
한국어
한국어

Map of dog off-leash trial area



City of Ryde

For further information
Visit www.ryde.nsw.gov.au/haveyoursay/CharityCreek
Phone Customer Service on 9952 8222
Email cityofryde@ryde.nsw.gov.au

Flyer distribution area:



ITEM 5 (continued)

ATTACHMENT 1

CHARITY CREEK CASCADES - DOG OFF-LEASH TRIAL

Appendices (continued)

PARK SIGNAGE

CHARITY CREEK CASCADES

DOG OFF-LEASH TRIAL



A 12-MONTH DOG OFF-LEASH TRIAL HAS COMMENCED AT CHARITY CREEK CASCADES

Council is conducting a 12-month dog off-leash trial at Charity Creek Cascades (55 Linton Avenue, West Ryde) from Wednesday 7 September 2022 until Wednesday 6 September 2023.

During the trial, Council would like to hear your thoughts on the dog off-leash facilities, what you like and any ideas or suggestions for improvement.

Can Council consider fencing for this dog off-leash area?

Unfortunately, fencing of the off-leash area will not be possible at this site. This is due to the park being identified as a flood risk zone and the potential impact it could have on water flow in the park and to surrounding properties.





How do I give my feedback?

You can Have Your Say on the Charity Creek Cascades Dog Off-Leash Trial in a number of ways including:

Online Complete the online survey at www.ryde.nsw.gov.au/haveyoursay/CharityCreek or scan the QR code

Email cityofryde@ryde.nsw.gov.au

Post City of Ryde, Locked Bag 2069, North Ryde, NSW 1670

Submissions must be received by **Wednesday 6 September 2023**.



Scan to Have Your Say



Translation Assistance
한국어
中文

 City of Ryde

FOR MORE INFORMATION

Visit www.ryde.nsw.gov.au/haveyoursay/CharityCreek

Call Customer Service on 9952 8222

Email cityofryde@ryde.nsw.gov.au

ITEM 5 (continued)

ATTACHMENT 1

CHARITY CREEK CASCADES - DOG OFF-LEASH TRIAL

Appendices (continued)



**NEWSPAPER AD - OPEN COMMUNITY CONSULTATIONS
THE WEEKLY TIMES**

HAVE YOUR SAY

OPEN COMMUNITY CONSULTATIONS

You are invited to have your say about documents, projects and proposals that are currently on public exhibition, or provide feedback on services and concerns that affect the community.

- Charity Creek Cascades - Dog Off-Leash Trial (Closing 6 September 2023)

Want to find out more?

To find out more about one of the above projects or for information on how to provide feedback, please visit www.ryde.nsw.gov.au/haveyoursay or call Customer Service on 9952 8222.

ITEM 5 (continued)

ATTACHMENT 1

CHARITY CREEK CASCADES - DOG OFF-LEASH TRIAL

Appendices (continued)



FACEBOOK AD



ITEM 5 (continued)

ATTACHMENT 1

CHARITY CREEK CASCADES - DOG OFF-LEASH TRIAL

Appendices (continued)



YOUR CITY NEWS

Have Your Say

On Exhibition

You are invited to have your say about documents, projects and proposals that are currently on public exhibition, or provide feedback on services and concerns that affect the community.

PROPOSED CLOSURE OF PART OF BLenheim ROAD, NORTH RYDE (CLOSES 9 OCT 2022)

DRAFT PROPERTY POLICY (CLOSES 13 OCT 2022)

DRAFT SPORTS FIELDS ACTION PLAN - TOWARDS 2036 (CLOSES 13 OCT 2022)

FIXED CAR SHARE SPACES 2022 (CLOSES 17 OCT 2022)

DRAFT COUNCILLOR EXPENSES & FACILITIES POLICY (CLOSES 31 OCT 2022)

DRAFT PETITIONS POLICY (CLOSES 31 OCT 2022)

DRAGON BOAT CLUB BOAT STORAGE TRIAL (CLOSES 11 DEC 2022)

CHARITY CREEK CASCADES DOG OFF-LEASH TRIAL (CLOSES 6 SEP 2023)

DEVELOPMENT APPLICATIONS ON EXHIBITION