

Section A – Key Information

Introduction

The Council of the City of Ryde is seeking expressions of interest from suitably qualified and experienced Artists for an AiR (non-residential) program as a platform to support professional development, showcase creativity in Ryde, create conversation through expression and build community connection. It focuses on the development of artists by providing recipients with a spacious studio environment in which to pursue and further extend their art practice. The studio space is located at Westward Cottage in the heart of Ryde and next to Top Ryde City.

EOI Key Dates and Process

The key dates for this EOI are:

EOI Open Date	Tuesday 1 July 2025
Closing Date for lodgment of responses to this EOI:	Sunday 31 August 2025
Closing Time for lodgment of responses to this EOI:	2:00 PM on the Closing Date
Assessment of Application	1 - 14 September 2025
Notification of Outcome	Between 15 – 19 September 2025

Respondents must lodge their responses by the Closing Date and Closing Time via email to: youssefz@ryde.nsw.gov.au

An EOI Evaluation Panel from the City of Ryde staff will be established to evaluate submissions.

The Evaluation Process uses the Evaluation Criteria set outlined below:

- Suitability
- Professionalism
- Benefit/Need
- Previous Partnership Programs

EOI Contact Details

Any correspondence and queries regarding this EOI may be forwarded to the City of Ryde contact, Sean Willenberg (Youssef Zumut will be on leave from 4 July – 26 August).

Please note that we will not be able to answer any specific questions or give specific tips about applying for the residency. Clarification around evaluation criteria definition is acceptable. This is to ensure fair and equal communication for all applicants.

Name:	Sean Willenberg
Telephone:	M: 0466023554
Email:	SeanW@ryde.nsw.gov.au

Section B – About the Artist-In-Residence Program

ABOUT THE CITY OF RYDE Artist-In-Residence Program (AiR)

Creativity is part of everyday life and is central to how we share our stories, connect with each other and celebrate our City - City of Ryde Arts and Creativity sector aims to support, connect and empower the community.

City of Ryde is looking to establish an AiR (non-residential) program as a platform to support professional development, showcase creativity in Ryde, create conversation through expression and build community connection.

It focuses on the development of artists by providing recipients with a spacious studio environment in which to pursue and further extend their art practice.

The studio space is located at Westward Cottage in the heart of Ryde and next to Top Ryde City.

Successful applicants will be granted the studio for a period of six months or twelve months (artist to provide preference) and will receive a \$1500 or \$3000 stipend (respectively) to assist with the preparation and delivery of the projects – artist to demonstrate ability to support community initiatives and willingness to work with Council staff on developing ideas for open studio, workshops and community engagement programs.

ABOUT WESTWARD COTTAGE



Westward Cottage is a two-story modest Victorian workers' cottage of dressed sandstone and brick. The building was originally constructed between 1844 and 1850 and has undergone various modifications and additions.

Westward Cottage is located approximately 11 kilometers northwest of the Sydney CBD and around 8.5 kilometers east of the Parramatta CBD. Address is 8 Turner Street, Ryde, NSW 2112.



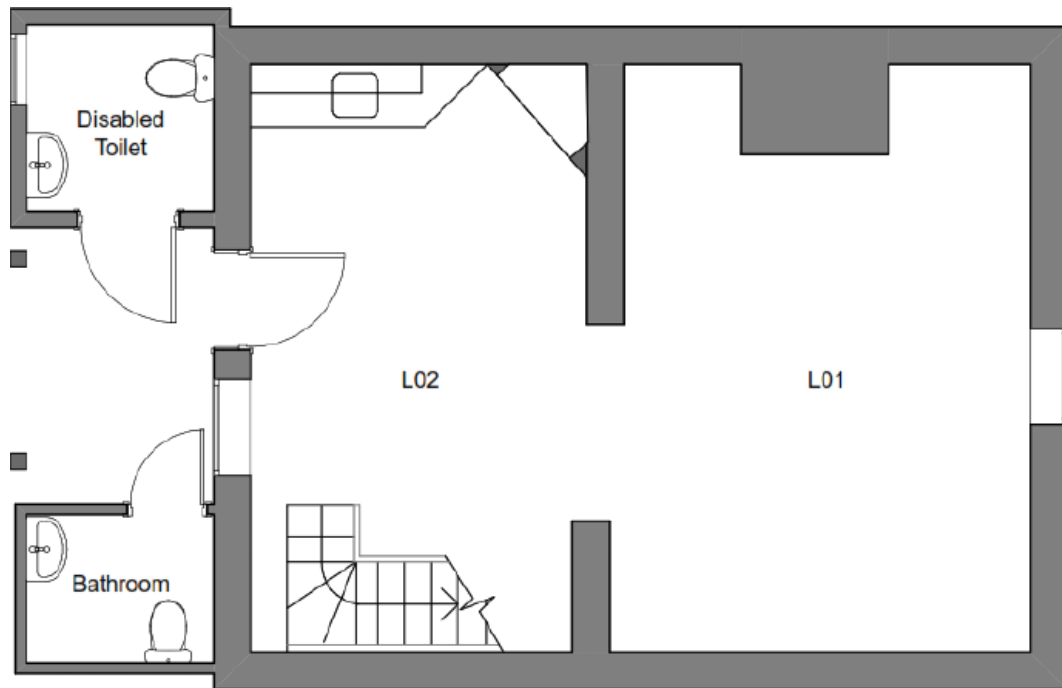
Westward Cottage has two stories – the ground floor at street level (Turner Street) and a lower ground floor below – each level has two rooms. The cottage has a front a rear room on both floors, both of which open to a front and rear verandah on the ground floor. Bathrooms are located at the rear of the cottage at lower ground level. Access is limited via stairs.

Accessibility

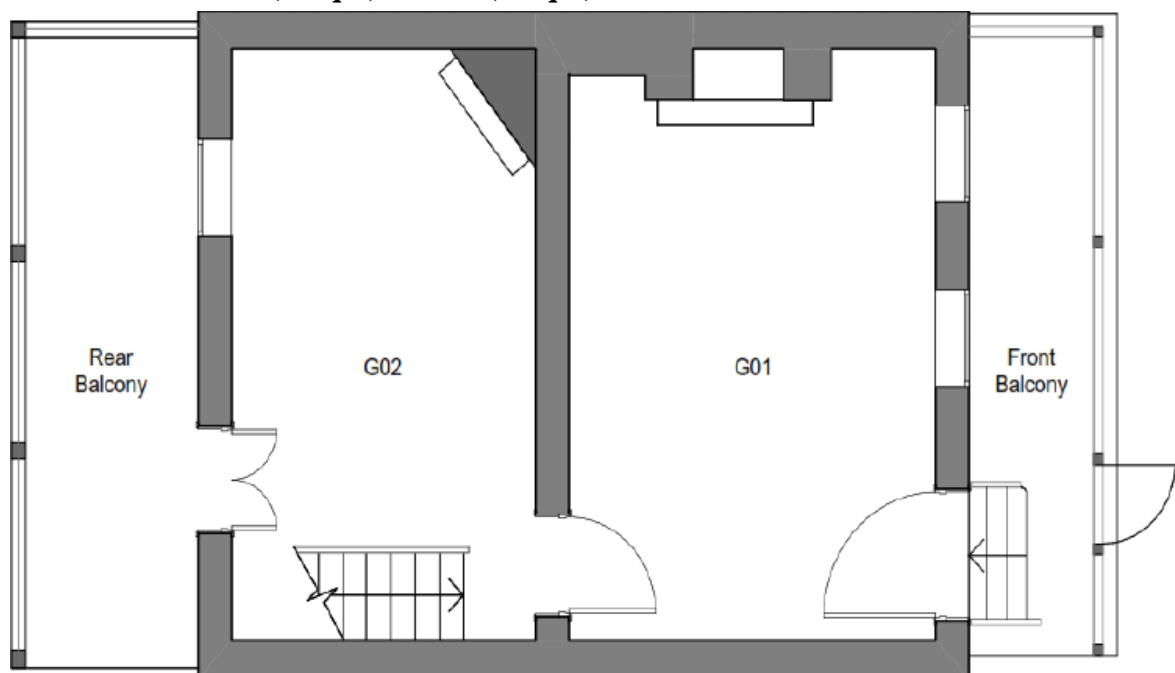
Westward Cottage has stair (5 steps) access from the street level. The lower level has ramp access to the entrance, with 1 step to get into the cottage. There is no accessible access from the lower level to the upper level, with a staircase being the only option.

Lower Ground Floor – L01

& L02 (16sqm)



Ground Floor – G01 (20sqm) & G02 (18sqm)



AIMS

City of Ryde AiR program aims to:

- Support local artist practice, development and exploration.
- Showcase and celebrate City of Ryde's spaces.
- Foster cross-cultural networks and partnerships.
- Assist artists in profiling their practice and support the development of new work.
- Provide mentorship/skill sharing opportunities for artists to connect with the local creative community.
- Provide opportunities for artists to interact with the community and foster cultural activity – including, but not limited to, open studios, workshops, exhibitions and public initiatives).
- To foster a dialogue about the benefit of art on individuals and the community.

ELIGIBILITY

- The City of Ryde AiR program is open to artists practicing all art forms
- Artist to be a resident of Ryde or have a strong connection to Ryde.
- Emerging or established artist.
- Commitment to use the studio regularly (minimum 15 hours per week)
- Artist to have public liability insurance at the commencement of the residency.
- Artists must be Australian Citizen or permanent resident and aged 18 years or older.

SELECTION PROCESS

Applications are assessed against the artistic merit of the proposal and the benefit of the residency for the applicant's professional development and contribution to creative public programming. Once the application period has closed, a selection panel will consist of Council's staff and management. The selection panel will prioritise applications based on the strength of the following outcomes:

- **Suitability:** the project/art medium is suitable for the space and is clear, well considered and addresses the application aims and eligibility. Artist is a Ryde Resident or has a strong connection to Ryde. Demonstrate ability to support community initiatives and willingness to work with Council staff on developing ideas for open studio, workshops and community engagement programs – minimum four programs for twelve months and two programs for six months.
- **Professionalism:** Artistic merit, experience and qualifications, professional development aspirations – *we strongly encourage links and supporting documents to be provided to strengthen your application.*

- **Benefit/Need:** The artist demonstrates need or clear benefits from the residency – ie what will be gained from the residency and the benefits/outcomes for the community.
- **Partnership Programs:** Artist demonstrates and provides examples of any partnership projects they have worked on, including duration and success of the program.