



Addressing of New Developments



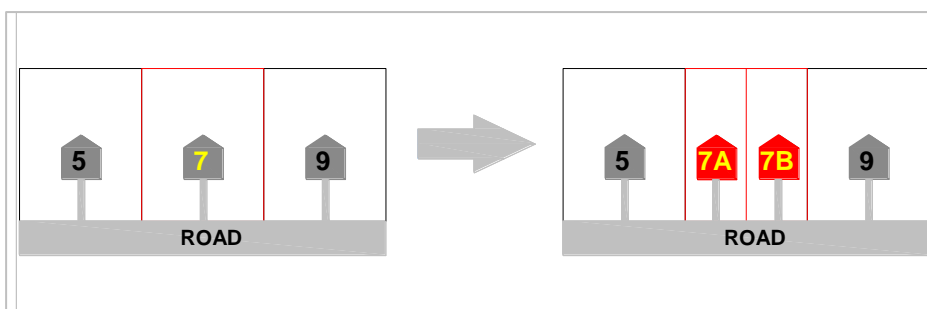
New developments can have an impact on the existing property addresses in a street, so it is recommended that you contact Council to discuss proposed addressing for your development. Utility companies will ask you for the new addresses before they organise additional connections to your development, so it is important that you contact Council before you commence construction,

General Addressing Principles

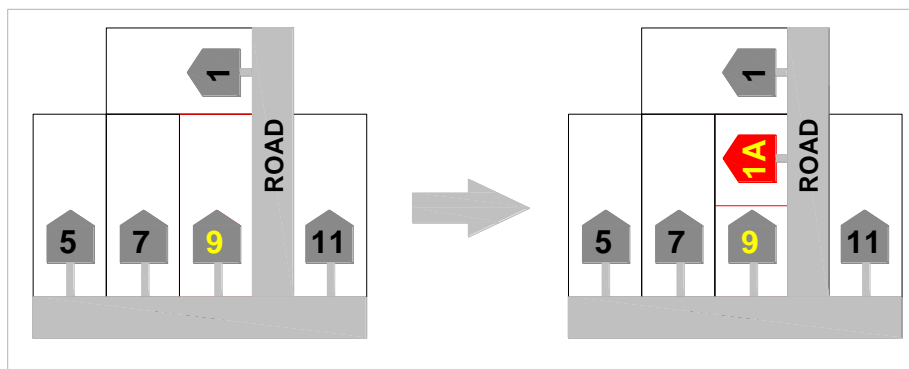
- Council is responsible for issuing all official property addresses within the City of Ryde local government area
- All new addresses are allocated based on Australian Standard ASNZS 4819 (Nov 2011) and the NSW Government Address Policy and User Manual (June 2021)
- Number ranges, e.g. 1-9 South Street, are no longer used, now single numbers are allocated, e.g. 1 South Street
- Strata units are numbered 1, 2, 3, etc in small buildings and floor numbers are used in large buildings eg. 101, 201, 301, etc (first number is the floor, next two numbers are the unit numbers, like hotel rooms)
- If there are no gaps in existing numbers for a new development and additional numbers are required, suffixes can be used (see Scenario 2)
- Suffixes have to start at 'A' and shall, if possible, not extend beyond 'E' sequentially in the same direction as the numbering of addresses (see Scenario 1)

Common Addressing Scenarios

Scenario 1: Subdivision of a site into 1 or more new properties



Scenario 2: Addressing of a property on a corner site, based on driveway / vehicular access location

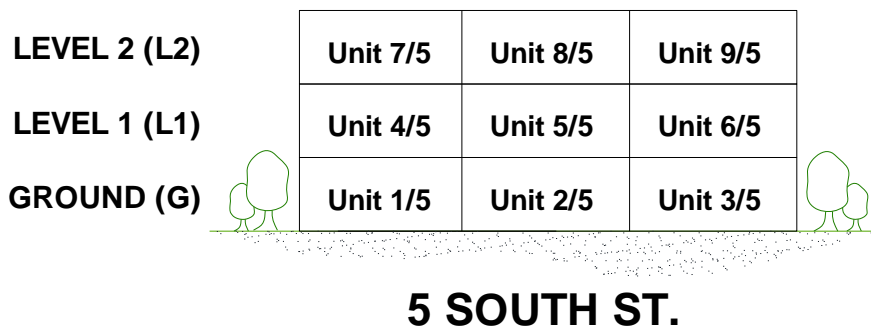




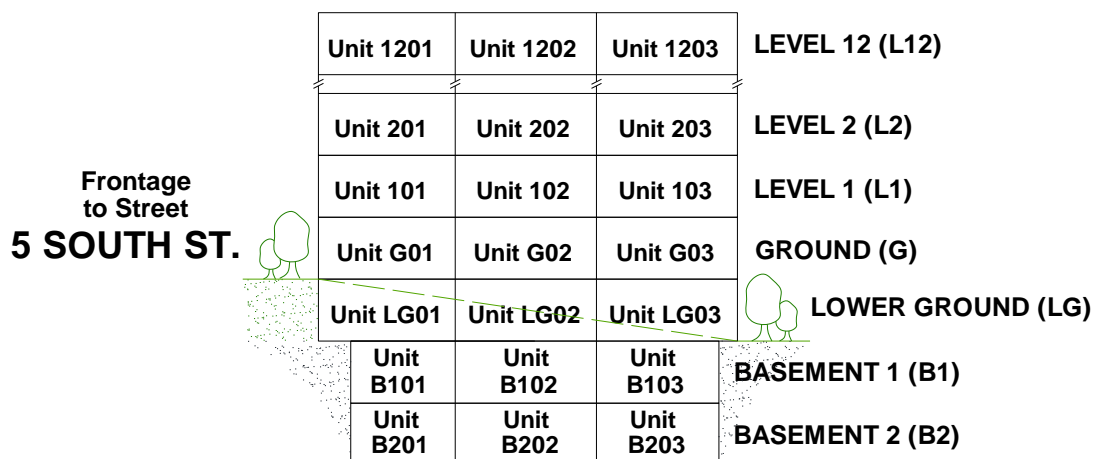
Addressing of New Developments



Scenario 3: Addressing of a small apartment building



Scenario 4: Addressing of a large apartment building with floor numbers



Large Apartment Block

Examples of addresses from this scenario will be read as LG02/5 South Street (being unit 2 on level LG); or 1003/5 South Street (being unit 3 on level 10). The idea is similar to hotel room numbering.

What do I need to do?

Please contact Council's Spatial Data Services by phone on 99528222 or email your site plan to cityofryde@ryde.nsw.gov.au to discuss the addressing of your proposed development.

City Of Ryde

Customer Service Centre
1 Pope Street RYDE
Phone **9952 8222**
Email cityofryde@ryde.nsw.gov.au

Website: www.ryde.nsw.gov.au

Office Hours:

9:00am to 5:00pm Monday to Friday

8:30am to 4:45pm Monday to Friday for telephone enquiries