



# AUDIT OF CONFERENCE FACILITIES IN THE CITY OF RYDE

May 2010

# CONFERENCE/FUNCTION CENTRES



The audit encompassed 15 external conference/function centres and 11 City of Ryde venues.

The external conference/function centres are as follows:-

- The Grand Pittwater Function Centre
- The Heritage Function Centre
- Stamford Grand Hotel North Ryde
- Travelodge Macquarie North Ryde
- Courtyard By Marriott North Ryde
- Quest North Ryde
- Medina Executive North Ryde
- Eden Gardens North Ryde
- Curzon Hall
- Jenkins Hall
- Next Generation
- Gladesville RSL and Community Club
- The Ambassador Restaurant
- Macquarie Graduate School of Management
- Dunmore Lang College

# CITY OF RYDE CONFERENCE/FUNCTION VENUES



The City of Ryde venues are as follows:-

- Ryde Civic Hall
- North Ryde School of Arts Community Centre
- Brush Farm House
- Argyle Hall
- Eastwood Community Hall
- West Ryde Hall
- Marsfield Community Centre
- Shepherd's Bay Community Centre
- Eastwood Croquet Club
- Eastwood Women's Rest Centre
- Gladesville Library Meeting Room

# The Grand Pittwater Function Centre

Address: Cnr Magdala & Pittwater Rds, North Ryde  
(located within North Ryde RSL Club)

Facilities: Five conference rooms available to accommodate small meetings for 10 people up to theatre style presentations for 360 people (Corporate packages available)

Catering: Numerous menu options available

Parking: 900 on-site car spaces available (free)

Accommodation: No on-site accommodation available

Conference Room Equipment (included with Corporate Package):-

- Overhead projectors and screens
- Wireless microphones
- Internet access
- Flipcharts and whiteboards
- Lectern



# The Heritage Function Centre

*The Heritage*  
FUNCTION CENTRE

Address: 117 Ryedale Road, West Ryde  
(located within Ryde-Eastwood Leagues Club)

Facilities: Eight conference rooms available to accommodate small meetings for 12 people up to theatre style presentations for 355 people (Corporate packages available)

Catering: Numerous menu options available

Parking: 450 on-site car spaces available (free)

Accommodation: No on-site accommodation available

Conference Room Equipment (included with room hire):-

- PA system with ceiling speakers
- Lectern/microphone
- Microphone (with lead)
- Whiteboard with markers and eraser
- Projector screen



# Stamford Grand North Ryde



Address: Cnr Epping and Herring Roads, North Ryde

Facilities: Twelve conference rooms available to accommodate small meetings for 12 people up to theatre style presentations for 240 people (Corporate packages available)

Catering: Numerous menu options available

Parking: 300 on-site car spaces available (free)

Accommodation: 257 rooms available on-site

Conference Room Equipment (included with room hire):-

- Screen
- Whiteboard
- Flipchart



# Travelodge Macquarie North Ryde

**Address:** 81 Talavera Road, North Ryde (located within Macquarie University grounds)

**Facilities:** Only one conference room available to accommodate small meetings for 15 people (Corporate packages available)

**Catering:** Numerous menu options available

**Parking:** 300 on-site car spaces available (\$5.00 fee)

**Accommodation:** 120 rooms available on-site

**Conference Room Equipment (included with room hire):-**

- Whiteboard
- Projector
- Television
- Wireless Internet available







# Courtyard By Marriott North Ryde

Address: 7-11 Talavera Road, North Ryde

Facilities: Eight conference rooms available to accommodate small meetings for 8 people up to theatre style presentations for 90 people (Corporate packages available)

Catering: Numerous menu options available

Parking: 50 on-site car spaces available  
(parking complimentary for conference)  
(\$12.00 fee if utilising accommodation)

Accommodation: 196 rooms available on-site

Conference Room Equipment (included with room hire):-

- Projector Screen
- Whiteboard
- Flipchart





# Atlantis & Quest North Ryde



Address: 58-62 Delhi Road, North Ryde

Facilities: Three conference rooms available to accommodate small meetings for 10 people up to theatre style presentations for 100 people (Corporate packages available)

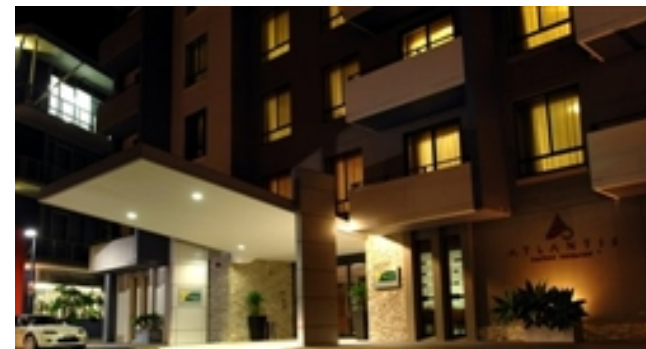
Catering: Numerous menu options available

Parking: 90 on-site car spaces available (free)

Accommodation: 173 rooms available on-site

Conference Room Equipment (included with room hire):-

- Overhead Projector Screen
- Whiteboard
- Flipchart



# Median Executive North Ryde

- Address: 2 Busaco Road, North Ryde
- Facilities: Two conference rooms available to accommodate small meetings up to a maximum of 30 people per room (Corporate packages available)
- Catering: Numerous menu options available
- Parking: 80 on-site car spaces available (free)
- Accommodation: 58 apartments available on-site

## Conference Room Equipment (included with room hire):-

- Whiteboard and Markers
- Overhead Screen
- Flipchart and Markers



# Eden Gardens North Ryde

Address: 301-307 Lane Cove Road, North Ryde

Facilities: Six indoor conference rooms available to accommodate small meetings for 10 people up to theatre style presentations for 130 people (Corporate packages available)

Catering: Numerous menu options available

Parking: 200 on-site car spaces available (free)

Accommodation: No on-site accommodation available

Conference Room Equipment (included with room hire):-

- Data Projector and Screens
- Flipchart
- Whiteboard



# Curzon Hall

Address: 53 Agincourt Road, Marsfield

Facilities: Six conference rooms available to accommodate small meetings for 30 people up to theatre style presentations for 800-900 people (Corporate packages available)

Catering: Numerous menu options available

Parking: 200 on-site car spaces available (free)

Accommodation: No on-site accommodation available

Conference Room Equipment (included with room hire):-

- Whiteboard
- Flipchart





# Jenkins Hall

- Address:** Lady Game Drive, Chatswood
- Facilities:** Two conference rooms available to accommodate theatre style presentations for up to 80 people (Corporate packages available)
- Catering:** Numerous menu options available
- Parking:** 120 on-site car spaces available (\$7.00 charge per vehicle – park entry)
- Accommodation:** No on-site accommodation available
- Conference Room Equipment (included with room hire):-**
- Electronic Whiteboard
  - Flipcharts
  - Projector and Screen

# Next Generation



Address: 504a Victoria Road, Ryde

Facilities: Five conference rooms available to accommodate small meetings for 8 people up to theatre style presentations for 300 people(Corporate packages available)

Catering: Numerous menu options available

Parking: 150 on-site car spaces available (free)

Accommodation: No on-site accommodation available

Conference Room Equipment (included with room hire):-

- Whiteboard
- Screen





# Gladesville RSL & Community Club

Address: 4 Linsley Street, Gladesville

Facilities: Two conference rooms available to accommodate theatre style presentations for 200 people (Corporate packages available)

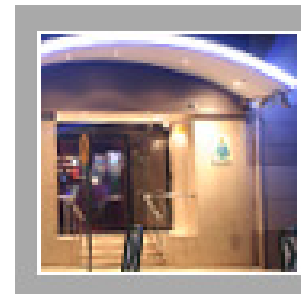
Catering: Numerous menu options available

Parking: Car park across the road with 300 car spaces available (free)

Accommodation: No on-site accommodation available

Conference Room Equipment (included with room hire):-

- Projector and Screen
- PA System and Microphone
- Whiteboard
- Flipchart





# The Ambassador Restaurant

- Address: 250 Blaxland Road, Ryde  
(located within Ryde TAFE College)
- Facilities: Two conference rooms and an auditorium available to accommodate theatre style presentations for 150 people in the restaurant and 180 people in the auditorium  
(Corporate packages available)
- Catering: Numerous menu options available
- Parking: 200 on-site car spaces available  
(parking complimentary for conference)
- Accommodation: No on-site accommodation available

## Conference Room Equipment (included with Corporate Package):-

- Projector and Screen
- PA System and Microphone
- Whiteboard / Smartboard
- Lectern





# Macquarie Graduate School of Management

**Address:** 99 Talavera Road, Macquarie Park  
(located within Macquarie University Grounds)

**Facilities:** Six amphitheatres, seven conference rooms and 33 breakout rooms available to accommodate small meetings for 8 people up to theatre style presentations for 150 people. In total can cater for a total of 250 people over all facilities. (Corporate packages available).

**Catering:** Numerous menu options available

**Parking:** 200 on-site car spaces available (free)

**Accommodation:** 40 rooms available on-site

**Conference Room Equipment (included with room hire):-**

- Flipchart easel and paper
- Whiteboard and markers
- Overhead projector and screen





# Dunmore Lang College

- Address:** 130 Herring Road, Macquarie Park  
(located within Macquarie University Grounds)
- Facilities:** Seven conference rooms available to accommodate small meetings for 8 people up to theatre style presentations for 120 people (during semester) and 270 (during recess) (Corporate packages available)
- Catering:** Numerous menu options available
- Parking:** 40 on-site car spaces available (free)
- Accommodation:** 50 rooms available on-site (during semester) and 250 rooms available (during recess)

## Conference Room Equipment (included with room hire):-

- Whiteboard and Markers
- Flipchart
- Lectern and Microphone
- Overhead projector and screen



# Ryde Civic Hall

- Address: 1 Devlin Street, Ryde
- Facilities: Venue suitable to accommodate theatre style presentations for 700 people
- Catering: Not available – suitable for self caterers
- Parking: 65 on-site car spaces available (free)
- Accommodation: No on-site accommodation available

## Facilities available:-

- Stage / lighting / curtains
- Large kitchen / fridges / dishwasher
- Trestle tables and chairs
- Three phase power
- PA System and Microphones
- Grand Piano and CD Player
- Air Conditioning / Wheelchair access



# North Ryde School of Arts Community Centre

- Address: 201 Cox's Road, North Ryde
- Facilities: Venue suitable to accommodate theatre style presentations for 500 people
- Catering: Not available – suitable for self caterers
- Parking: 40 car spaces available opposite venue (free)
- Accommodation: No on-site accommodation available

## Facilities available:-

- Stage / dance floor
- Large kitchen / fridge / dishwasher
- Trestle tables and chairs
- Three phase power
- PA System and Microphones
- Grand Piano and CD Player
- Air Conditioning / Wheelchair access



# Brush Farm House

- Address: Lawson Street, Eastwood
- Facilities: Venue suitable to accommodate 70 people in the Hall, 120 in the House and 1000 in the Garden
- Catering: Not available – suitable for self caterers
- Parking: 15 on-site car spaces available (free)
- Accommodation: No on-site accommodation available

Facilities available:-

- Fully equipped kitchen
- Tables and chairs
- PA System
- Television / Video
- Air Conditioning
- Wheelchair access





# Argyle Hall

- Address: 33 Blaxland Road, Ryde
- Facilities: Venue suitable to accommodate theatre style presentations for 150 people
- Catering: Not available
- Parking: 35 on-site car spaces available (free)
- Accommodation: No on-site accommodation available

## Facilities available:-

- Small kitchen / domestic oven / microwave
- Trestle tables and chairs
- PA System
- Air Conditioning
- Wheelchair access





# Eastwood Community Hall

- Address:               Shaftsbury Road, Eastwood
- Facilities:             Venue suitable to accommodate theatre style presentations for 200 people
- Catering:             Not available
- Parking:              Only on-street parking available
- Accommodation: No on-site accommodation available

## Facilities available:-

- Small kitchen / domestic oven / microwave
- Trestle tables and chairs
- PA System
- Air Conditioning
- Wheelchair access

# West Ryde Hall

- Address: 1A Station Street, West Ryde
- Facilities: Venue suitable to accommodate theatre style presentations for 200 people
- Catering: Not available
- Parking: Only on-street parking available
- Accommodation: No on-site accommodation available

## Facilities available:-

- Kitchen / oven / fridge / microwave
- Trestle tables and chairs
- PA System
- Stage and organ
- Breakout rooms
- Air Conditioning
- Wheelchair access



# Marsfield Community Centre

- Address: 1A Trafalgar Place, Marsfield
- Facilities: Venue suitable to accommodate theatre style presentations for 60 people
- Catering: Not available
- Parking: 70 on-site car spaces available (free)
- Accommodation: No on-site accommodation available

## Facilities available:-

- Kitchen / small stove / fridge
- Trestle tables and chairs
- Air Conditioning
- Wheelchair access



# Shepherd's Bay Community Centre

Address: 3A Bay Drive, Meadowbank

Facilities: Venue suitable to accommodate theatre style presentations for 120 people

Catering: Not available – suitable for self caterers

Parking: Over 100 on-site car spaces available (free)

Accommodation: No on-site accommodation available

Facilities available:-

- Fully equipped kitchen
- Tables and chairs
- PA System
- Television / Video
- Air Conditioning
- Wheelchair access



# Eastwood Croquet Club

Address: Wingate Avenue, Eastwood

Facilities: Venue suitable to accommodate a group of 20 people

Catering: Not available

Parking: Only on-street parking available

Accommodation: No on-site accommodation available

Facilities available:-

- Kitchenette
- Trestle tables and chairs



# Eastwood Women's Rest Centre

- Address: Hillview Road, Eastwood
- Facilities: Venue suitable to accommodate a group of 45 people
- Catering: Not available – suitable for self caterers
- Parking: Only on-street parking available
- Accommodation: No on-site accommodation available

## Facilities available:-

- Fully equipped kitchen
- Trestle tables and chairs
- Air Conditioning
- Wheelchair access





# Gladesville Library Meeting Room

Address: 6 Pittwater Road, Gladesville

Facilities: Venue suitable to accommodate a group of 42 people

Catering: Not available

Parking: 40 car spaces available behind library (free)

Accommodation: No on-site accommodation available

## Facilities available:-

- Kitchenette
- Trestle tables and chairs
- Television and Video
- Screen / whiteboard
- Air Conditioning
- Wheelchair access





# EXTERNAL CONFERENCE VENUES



Venue	No. of Rooms	Maximum Capacity	Breakout Rooms	Corporate Packages	On-site Parking	On-site Accommodation	Equipment Available
The Grand Pittwater	5	360 (Theatre)	√	√	√	×	√
The Heritage	8	355 (Theatre)	√	√	√	×	√
The Stamford	12	240 (Theatre)	√	√	√	√	√
The Travelodge	1	15	×	√	√	√	√
The Marriott	8	90 (Theatre)	√	√	√	√	√
Quest	3	100 (Theatre)	√	√	√	√	√
Medina	2	30	×	√	√	√	√
Eden Gardens	6	130 (Theatre)	√	√	√	×	√
Curzon Hall	6	800-900 (Theatre)	√	√	√	×	√

# EXTERNAL CONFERENCE VENUES



Venue	No. of Rooms	Maximum Capacity	Breakout Rooms	Corporate Packages	On-site Parking	On-site Accommodation	Equipment Available
Jenkins Hall	2	80 (Theatre)	x	√	√	x	√
Next Generation	5	300 (Theatre)	√	√	√	x	√
Gladesville RSL & Community Club	2	200 (Theatre)	x	√	√	x	√
The Ambassador Restaurant	3	150 (Theatre)	x	√	√	x	√
Macquarie Graduate School of Management	46	250 (Theatre)	√	√	√	√	√
Dunmore Lang College	7	120 (Theatre - during semester) 270 (Theatre - during recess)	√	√	√	√	√

# CITY OF RYDE VENUES



Venue	Maximum Capacity	Kitchen / Kitchenette	Air Con	Tables / Chairs	PA System	On-site Parking	On-site Accommodation
Civic Hall	700 (Theatre)	√	√	√	√	√	×
North Ryde School of Arts Community Centre	500 (Theatre)	√	√	√	√	√	×
Brush Farm House	70 Hall, 120 House and 1000 Garden	√	√	√	√	√	×
Argyle Hall	150 (Theatre)	√	√	√	√	√	×
Eastwood Community Hall	200 (Theatre)	√	√	√	√	×	×
West Ryde Hall	200 (Theatre)	√	√	√	√	×	×
Marsfield Community Centre	60 (Theatre)	√	√	√	×	√	×

# CITY OF RYDE VENUES



Venue	Maximum Capacity	Kitchen / Kitchenette	Air Con	Tables / Chairs	PA System	On-site Parking	On-site Accommodation
Shepherd's Bay Community Centre	120 (Theatre)	√	√	√	√	√	×
Eastwood Croquet Club	20	√	×	√	×	×	×
Eastwood Women's Centre	45	√	√	√	×	×	×
Gladesville Library Meeting Room	42	√	√	√	×	√	×

# CONSOLIDATED TOTAL



Suburb	No. of Venues	Maximum Capacity over all Venues (approximately)	Approx number of on-site car spaces	Approx number of rooms (accom)
North Ryde	7	1450	1660	684
Macquarie Park	3	385 (during semester) 535 (during recess)	540	210 (during semester) 410 (during recess)
West Ryde	2	555	450	0
Ryde	4	1300	450	0
Eastwood / Marsfield	6	1345	285	0
Meadowbank	1	120	100	0
Gladesville	2	242	340	0
Chatswood	1	80	120	0