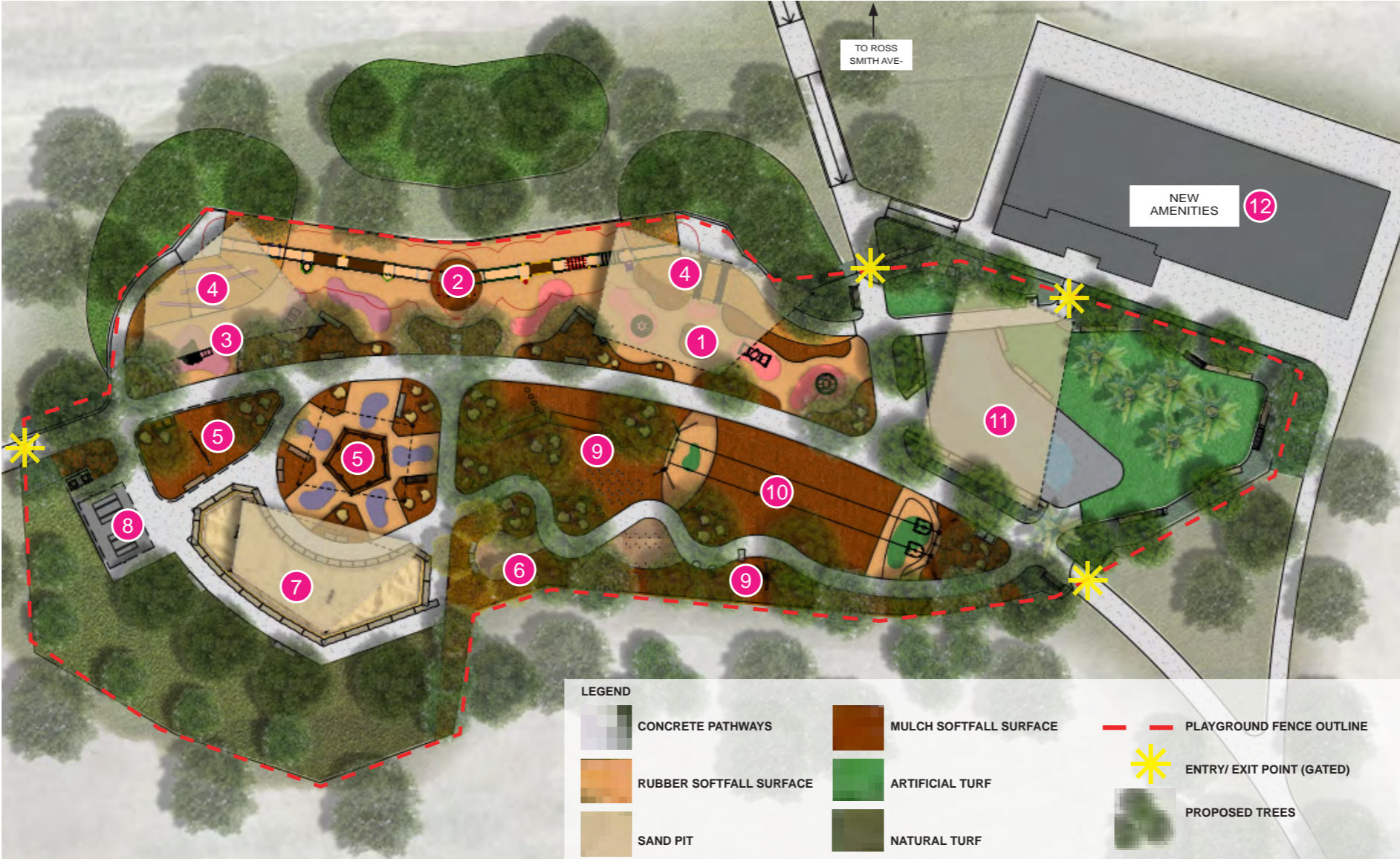


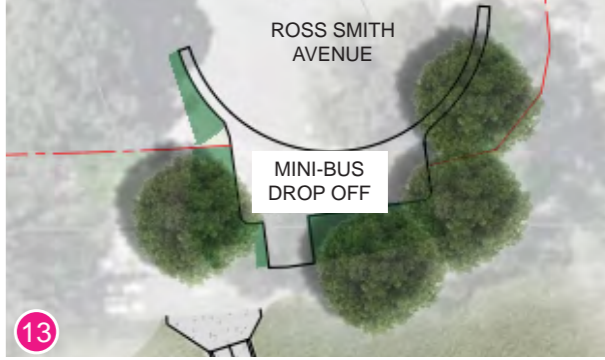


Construction start: Early April 2021
Construction finish: February 2022
 (weather permitting)

Thank you for your patience



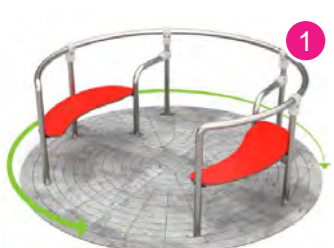
NEW AMENITIES BUILDING
 INCLUDING TOILETS, CANTEN AND TEAM



MINIBUS DROP OFF
 MINIBUS DROP OFF BAY AT ROSS SMITH AVENUE CUL-DE-SAC INCLUDING ACCESSIBLE PATH TO PLAYGROUND AND AMENITIES



ACCESSIBLE PARKING
 x3 ACCESSIBLE PARKING SPACES AT WESTERN CAR-PARK WITH ACCESSIBLE PATH TO PLAYGROUND AND AMENITIES



1 ACTIVE PLAY ZONE
 PLAY ZONE WITH SHADE SAIL AND FIXED EQUIPMENT INCLUDING ACCESSIBLE CAROUSEL, SEE-SAW AND CLIMBING NET



5 SWING ZONE
 INCLUDING 5-WAY GROUP SWING AND DUAL SWING WITH ACCESSIBLE SEAT



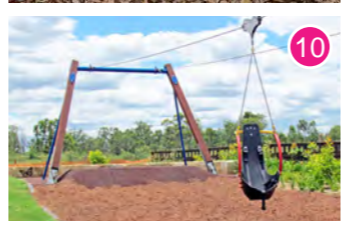
9 NATURE PLAY SENSORY ZONE
 NATURE PLAY ZONE WITH FIXED SENSORY PLAY PANELS, STEPPERS AND BALANCING LOGS



2 PLAY BRIDGE
 ELEVATED PLAY BRIDGE BETWEEN MOUNDS WITH VARIOUS CLIMBING FEATURES



6 QUIET ZONE
 INTIMATE SPACE FOR PASSIVE PLAY INCLUDING STORY TELLING



10 CABLE-WAY
 DUAL CABLE-WAY WITH ACCESSIBLE SEAT



3 JUNIOR PLAY
 JUNIOR ORIENTATED PLAY EQUIPMENT WITH SHADE SAIL INCLUDING SPRING ROCKERS AND CUBBY HOUSE



7 SAND PLAY
 SAND PIT INCLUDING SHADE SAIL AND SAND DIGGER



11 WATER PLAY
 SPLASH PAD WATER PLAY AREA WITH INTERACTIVE WATER PLAY ELEMENTS AND SHADE SAIL



4 EMBANKMENT MOUNDS
 PLAY MOUNDS WITH SHADE SAILS AND FIXED EQUIPMENT INCLUDING SLIDES, CLIMBING ROPES AND GRIPS



8 SHELTER
 PICNIC SHELTER WITH FIXED ACCESSIBLE TABLES AND BBQ

